

A model for circuits Part 2: Potential difference *Dynamics first* Equipment

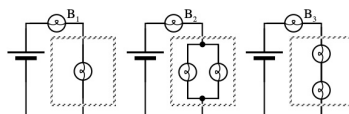
List

- battery
- battery holders (2)
- D-cell
- voltmeters (5-volt range)
- white board or large sheet of paper with markers
- bulbs (#14) in sockets
- ample connecting wire including some alligator clips
- set of circuits (see figure) - each with two D batteries and #14 bulbs (for demonstration)

Special Instructions

The batteries should be checked before tutorial to be sure that they are fresh. This is especially important for the circuit for part I.C.

Circuits for demonstration:



Comments: All the bulbs used by a single group of students should be identical.